

Against THE WIND

*Protecting Your
Home From Hurricane
Wind Damage*



American
Red Cross



During a hurricane, homes may be damaged or destroyed by high winds and high waves. Debris can break windows and doors, allowing high winds inside the home. In extreme storms, such as Hurricane Andrew, the force of the wind alone can cause weak places in your home to fail.

After Hurricane Andrew, a team of experts examined homes that had failed and ones that had survived. They found four areas that should be checked for weakness—the roof, windows, doors, and if you have one, garage door. In this brochure, we discuss some things you can do to help make your home stronger *before* the next hurricane strikes. You may need to make some improvements or install temporary wind protection. It is important that you do these projects *now*, before a hurricane threatens.

While these projects, if done correctly, can make your home safer during a hurricane, they are no guarantee that your home won't be damaged or even destroyed. If you are told by authorities to evacuate, do so immediately, even if you have taken these precautions.

The Roof

During a windstorm, the force of the wind pushes against the outside of your home. That force is passed along from your roof to the exterior walls and finally to the foundation. Homes can be damaged or destroyed when the energy from the wind is not properly transferred to the ground.

The first thing you should do is determine what type of roof you have. Homes with gabled roofs are more likely to suffer damage during a hurricane. A gabled roof looks like an A on the ends, with the outside wall going to the top of the roof (see Figure 1). The end wall of a home with a gabled roof takes a beating during a hurricane, and those that are not properly braced can collapse, causing major damage to the roof.

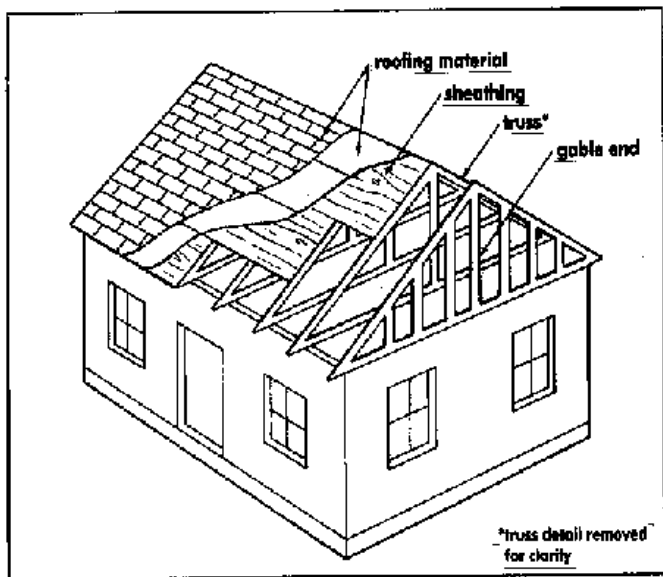


Figure 1. Gabled Roof

In most homes, gabled roofs are built using manufactured trusses. Sheets of roof sheathing, often plywood, are fastened to the trusses with nails or staples, and roofing material is fastened to the sheathing. In many cases, the only thing holding the trusses in place is the plywood on top. This may not be enough to hold the roof in place during a hurricane. Installing additional truss bracing makes your roof's truss system much stronger.

To inspect your roof's bracing, go into the attic. While working in your attic, you should wear clothing that covers your skin, work gloves, a hat, eye protection, and a dust mask. If your attic does not have a floor, be careful to walk only on the wood joists, or install boards wide enough to walk on as you work. Notice how the plywood is attached to the truss system. If most of the large nails or staples coming through the sheathing have missed the trusses, consider having the sheathing properly installed.

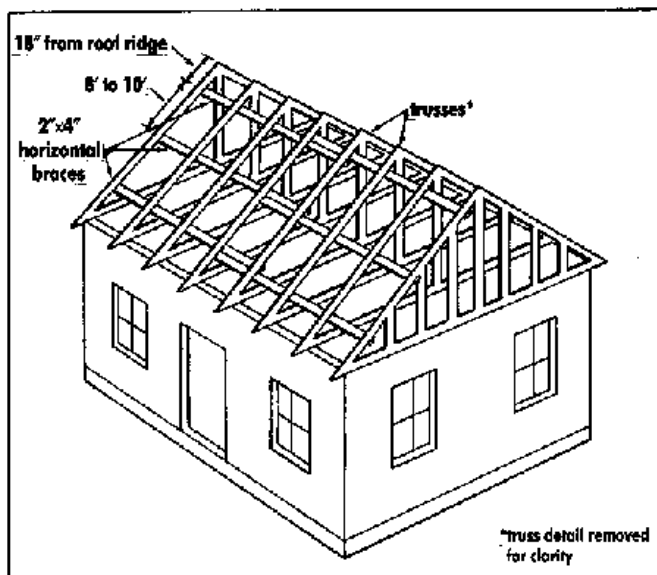


Figure 2. Truss Bracing

Truss bracing

In gabled roofs, truss bracing usually consists of 2x4s that run the length of the roof. If you do not have truss bracing, it should be installed. You can do this yourself or hire a professional. Install 2x4s the length of your roof, overlapping the ends of the 2x4s across two trusses (see Figure 2). Braces should be installed 18 inches from the ridge, in the center span, and at the base, with 8 to 10 feet between the braces. Use two 3-inch, 14-gauge wood screws or two 16d (16 penny) galvanized common nails at each truss. Because space in attics is generally limited, screws may be easier to install.

Gable end bracing

Gable end bracing consists of 2×4s placed in an “X” pattern from the top center of the gable to the bottom center brace of the fourth truss, and from the bottom center of the gable to the top center brace of the fourth truss (see Figure 3). Use two 3-inch, 14-gauge wood screws or two 16d galvanized common nails to attach the 2×4s to the gable and to each of the four trusses.

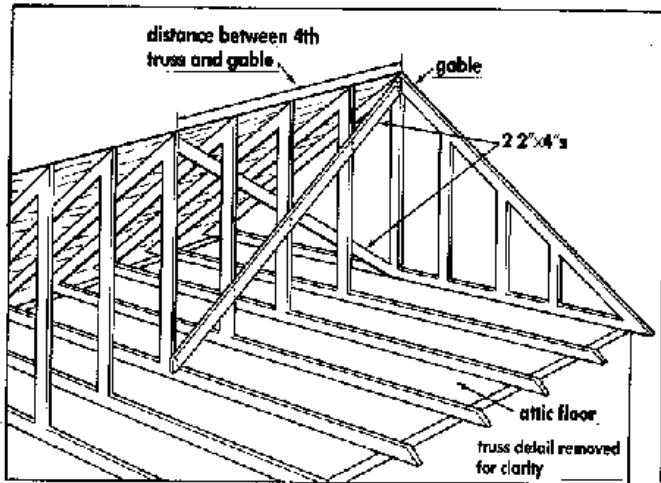


Figure 3. Gable End Bracing

Hurricane straps

There are many types of roof design. Regardless of your type of roof, hurricane straps are designed to help hold your roof to the walls. While you are in the attic, inspect for hurricane straps of galvanized metal (see Figure 4). Hurricane straps may be difficult for homeowners to install. You may need to call a professional to retrofit your home with hurricane straps. Check with your local government building officials to see if hurricane straps are required in your area.

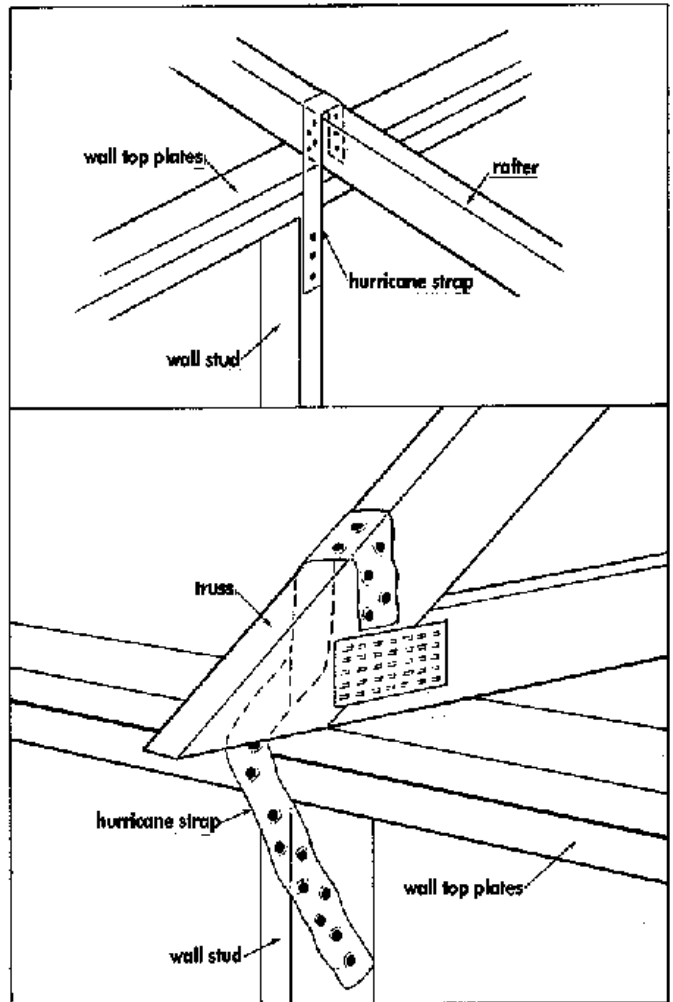


Figure 4. Hurricane Straps

Exterior Doors and Windows

The exterior walls, doors, and windows are the protective shell of your home. If your home's protective shell is broken, high winds can enter and put pressure on your roof and walls, causing damage. You can protect your home by strengthening the doors and windows.

Double entry doors

Most double doors have an active and an inactive or fixed door (see Figure 5). Check to see how the fixed door is secured at the top and bottom. The bolts or pins that secure most doors are not strong enough.

Some door manufacturers provide reinforcing bolt kits made specifically for their doors. Check with your local building supplies retailer to find out what type of bolt system will work for your door. The door bolt materials should cost from \$10 to \$40, depending on the type and finish. Doors with windows will need additional protection from flying debris. See the section on storm shutters for how to protect windows.

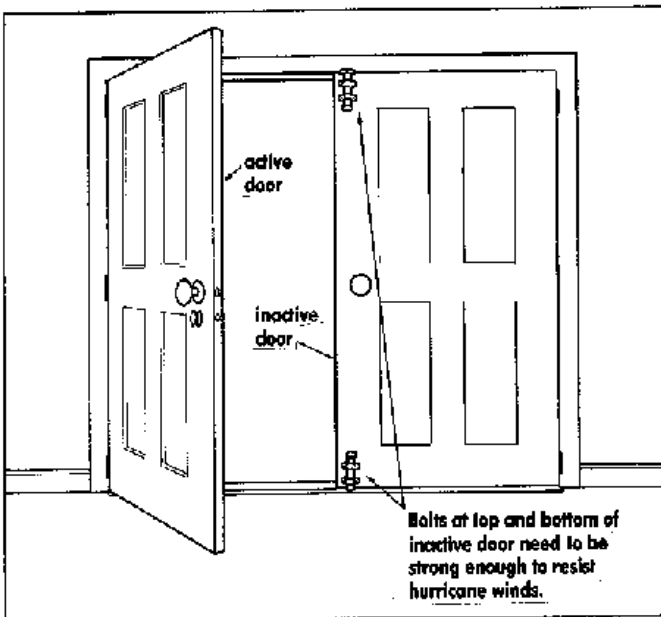


Figure 5. Double Entry Doors

Double-wide garage doors

Double-wide (two-car) garage doors can pose a problem during hurricanes because they are so large that they wobble as the high winds blow and can pull out of their tracks or collapse from wind pressure. If garage doors fail, high winds can enter your home through the garage and blow out doors, windows, walls, and even the roof.

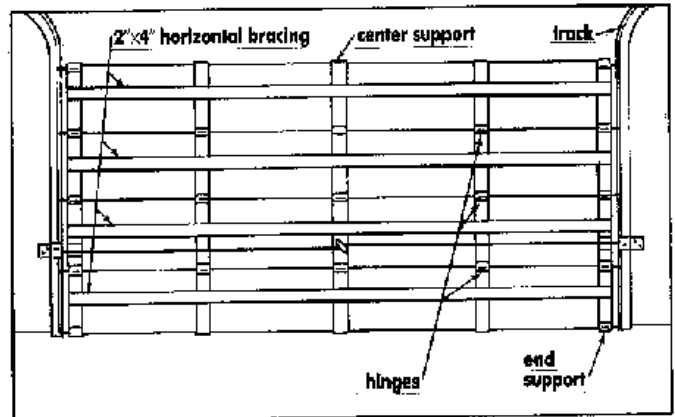


Figure 6. Double-Wide Garage Doors

Certain parts of the country have building codes requiring garage doors to withstand high winds. You should check with your local government building officials to see if there are code requirements for garage doors in your area. Some garage doors can be strengthened with retrofit kits. Check with your local building supplies retailer to see if a retrofit kit is available for your garage door. You can expect to pay from \$70 to \$150 to retrofit your garage door.

Many garage doors can be reinforced at their weakest points. Retrofitting your garage doors involves installing horizontal bracing onto each panel. This horizontal bracing can be part of a kit from the garage door manufacturer. You may also need heavier hinges and stronger center supports and end supports for your door (see Figure 6).

Check the track on your garage door. With both hands, grab a section of each track and see if it is loose or if it can be twisted. If so, a stronger track should be installed. Make sure that it is anchored to the 2×4s inside the wall with heavy wood bolts or properly attached to masonry with expansion bolts (see Figure 7).

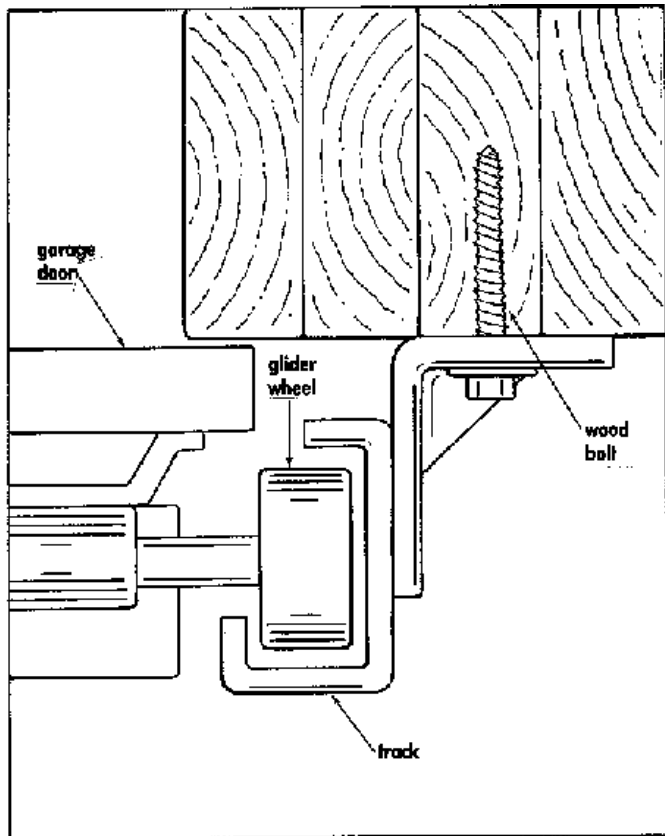


Figure 7. Garage Door Track Anchoring

After you have retrofitted your door, it may not be balanced. To check, lower the door about halfway and let go. If it goes up or down, the springs will need adjusting. The springs are dangerous and should be adjusted by a professional.

If you are unable to retrofit your door, you can purchase specially reinforced garage doors designed to withstand winds of up to 120 miles per hour. These doors can cost from \$400 to \$450 (excluding labor) and should be installed by a professional.

Storm shutters

Installing storm shutters over all exposed windows and other glass surfaces is one of the easiest and most effective ways to protect your home. You should cover all windows, French doors, sliding glass doors, and skylights. There are many types of manufactured storm shutters available. For more information on manufactured shutters, check with your local building supplies retailer. If you install manufactured shutters, follow the manufacturer's instructions carefully.

Before installing shutters, check with your local building official to find out if a building permit is required. It is important that you have your shutters ready now, and that you mark and store them so they can be easily installed during a hurricane watch.

Plywood shutters that you make yourself, if installed properly, can offer a high level of protection from flying debris during a hurricane. Plywood shutters can be installed on all types of homes.

Measure each window and each door that has glass, and add 8 inches to both the height and width to provide a 4-inch overlap on each side of the window or door. Sheets of plywood are generally 4×8 feet. Tell your local building supply retailer the size and number of openings you need to cover to determine how many sheets to buy.

To install plywood shutters you will need bolts, wood or masonry anchors, large washers, and 5/8-inch exterior-grade plywood. For windows 3 feet by 4 feet or smaller installed on a wood frame house, use 1/4-inch lag bolts and plastic-coated permanent anchors. The lag bolts should penetrate the wall and frame surrounding the window at least 1 3/4 inches. For larger windows, use 3/8-inch lag bolts that penetrate the wall and frame surrounding the window at least 2 1/2 inches. For windows 3 feet by 4 feet or smaller installed on a masonry house, use 1/4-inch expansion bolts and galvanized permanent expansion anchors. The expansion bolt should penetrate the wall at least 1 1/2 inches. For larger windows, use 3/8-inch expansion bolts that penetrate the wall at least 1 1/2 inches. The tools you will need are a circular or hand saw, a drill with the appropriately sized bits, a hammer, and a wrench to fit the bolts. To be safe, use eye protection and work gloves.

Cut the plywood to the measurements for each opening. Drill holes 2 1/2 inches from the outside edge of the plywood at each corner and at 12-inch intervals. Drill four holes in the center area of the plywood to relieve pressure during a hurricane.

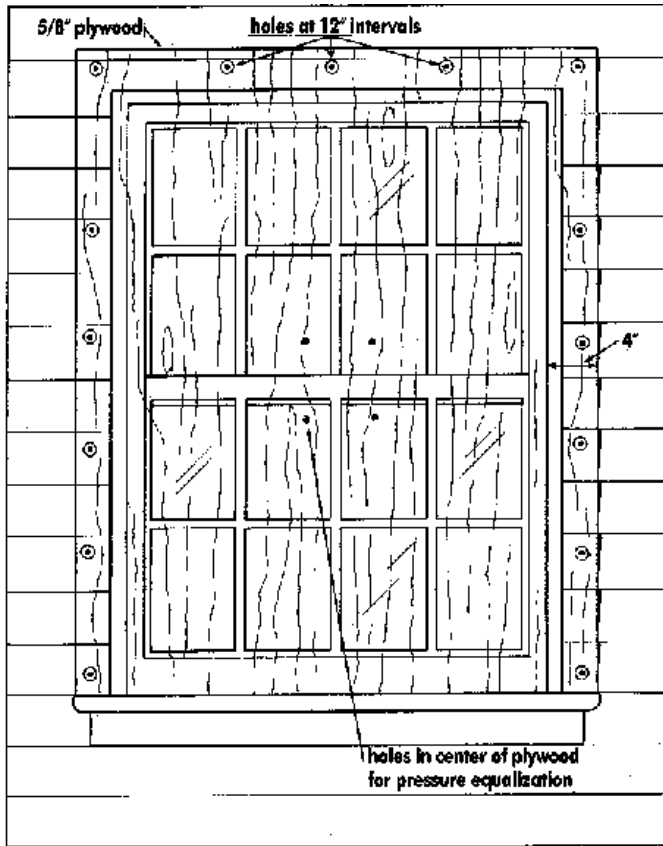


Figure 8. Plywood Storm Shutters

Place the plywood over the opening and mark each hole position on the outside wall (see Figure 8). Drill holes with the appropriate size and type of bit for the anchors. Install the anchors, the plywood, and the bolts to make sure they fit properly. On wood-frame houses, make sure that the anchors are secured into the solid wood that frames the door or window and not into the siding or trim. Mark each shutter so you will know where it is to be installed and store them and the bolts in an accessible place.

If the opening is larger than one sheet of plywood, you will need to make shutters with 2x4 bracing. This bracing can be two 2x4s at the middle and bottom of the two sheets of plywood, evenly spaced, with the 2-inch side attached to the inside of the storm shutter (see Figure 9). Attach the 2x4s to the outside of the storm shutter with 2-inch, 10-gauge wood screws before installing the shutter.

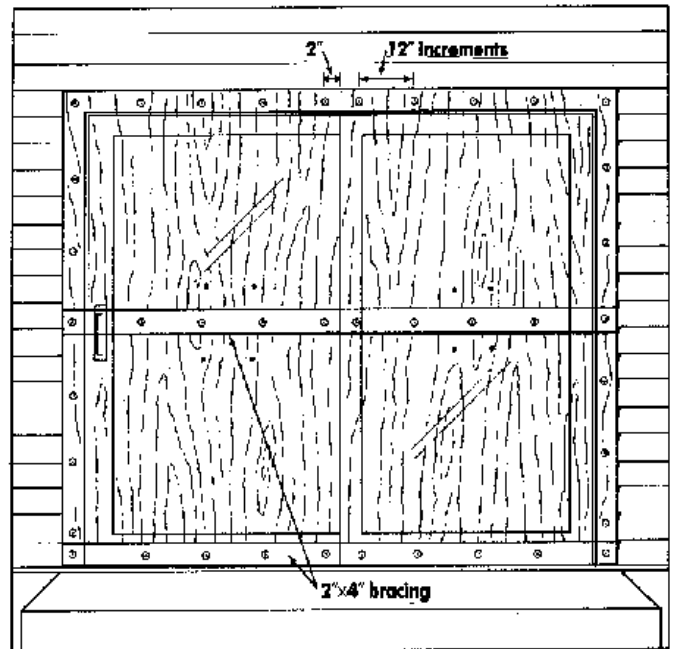


Figure 9. Large Plywood Storm Shutters

The recommendations in this brochure are not intended to replace local building code requirements or to serve as the only options for protecting your home from hurricane wind damage. For more information on protecting your home from hurricane wind damage, contact your local building official; your local building supply retailer; or a building professional, such as an engineer, architect, or experienced contractor.



Courtesy of Stuff Productions

Check Out Our Latest Books & Information



READY IN 10

“Ready In 10” teaches people who are totally unprepared for a disaster, how to be able to grab everything they need -- necessities, keepsakes, vital information -- and evacuate in less than ten minutes.

Then once the disaster is over, they'll be able to get back to living their normal lives, as quickly and easily as possible, even if they're completely disorganized and have never been through a real emergency.

Now available on Amazon.com, “Ready In 10” and the downloadable Get Ready Kit is specially designed to help people get through a disaster or emergency with their loved ones, vital documents and keepsakes intact. In other words they won't just survive a disaster, they'll be able to pick up their lives and go on, as quickly as possible. Do yourself a favor. Get a copy for yourself, get one for your best friend, get one for the people you love.

[Click Here to Purchase your copy on Amazon.com](#)
[Or Read More About it on our Website www.readyin10.org](http://www.readyin10.org)

GET YOUR STUFF TOGETHER



New! Get Your Stuff Together takes the knowledge readers gained in our book Ready In 10, and kicks it up a notch, with simple steps that families can take right now, to make specific types of items safe and secure.

Whether the danger comes from large scale natural disasters or a simple computer meltdown, readers will learn how to keep everything that's important to them, safe, sound and accessible, with our unique, easy-to-use, downloadable preparedness system. It comes free with the purchase of the book!

Each section highlights a different area, ranging from family photos, vital documents and music, to videos, computer files and recipes. In Get Your Stuff Together, you'll will learn: How To Handle Life's Little & Not So Little Emergencies, How To Avoid Loss The Easy Way -- By Preventing It, and How To Get Through A Disaster and Get Your Life Back Once It's Over. Most importantly you'll learn how to keep from losing the things that make your life, Your Life.

Do yourself a favor. Get a copy for yourself, get one for your best friend and get one for the people you love.

[Click Here to Purchase your copy on Amazon.com](#)
[Or Read More About it on our Website www.getyourstufftogether.com](http://www.getyourstufftogether.com)

FREE DOWNLOADABLE DISASTER GUIDES



Be sure to grab your free download guides for information on surviving hurricanes, tornadoes, earthquakes, floods, dorm checklists and other disasters.

<http://www.readyin10.org/disasters>

FREE GIFT!

**CLICK HERE
TO DOWNLOAD**

**Two Free Chapters
of our new book**



Get Your Stuff Together